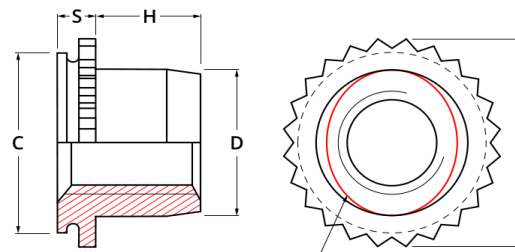


Self Clinch Miniature Nuts



ELLIPTICALLY SQUEEZED
BODY ON LOCKING STYLE

Self Clinch Miniature Nuts										
Thread Size	Material Code	Rec. Sheet Thickness	S Max	C +0.00 -0.13	D Max	A +0.13 -0.13	H +0.40 -0.00	Hole Size +0.40 -0.00	Maximum Hole In Attached Parts	Min CL To Edge Of Panel
M2 x 0.4	1	0.76-0.91	0.76	3.60	2.5	4.07	1.65	3.61	2.5	2.8
M3 x 0.5	1	0.99-1.14	1.02	4.37	3.96	4.88	1.90	4.39	3.5	3.6
	2	1.50-1.78	1.53							
M4x0.7	1	0.99-1.14	1.02	7.37	5.23	8.17	2.55	7.39	4.5	5.2
	2	1.50-1.78	1.53							
M5 x 0.8	1	0.99-1.14	1.02	7.37	6.48	8.17	3.05	7.39	5.5	5.2
	2	1.50-1.78	1.53							
M6 x 1.0	1	1.50-1.78	1.53	8.72	7.72	9.74	3.30	8.74	6.5	7.1

Material And Finish

Non Locking : Stainless Steel Series 300 (A2)
Locking: : Stainless Steel Series 300 (A2) + Molybdenum Disulphide Dry Film Lubricant
Parts Are Suitable For Installation In Ductile Panels With A Maximum Hardness 70HRB

Ordering Example

M3-1-A2 (Non Locking Miniature Nut Sheet Thickness 0.99-1.14)
M4-2-A2 (Locking Miniature Nut Sheet Thickness 1.50-1.78)